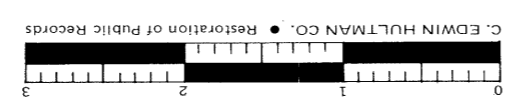
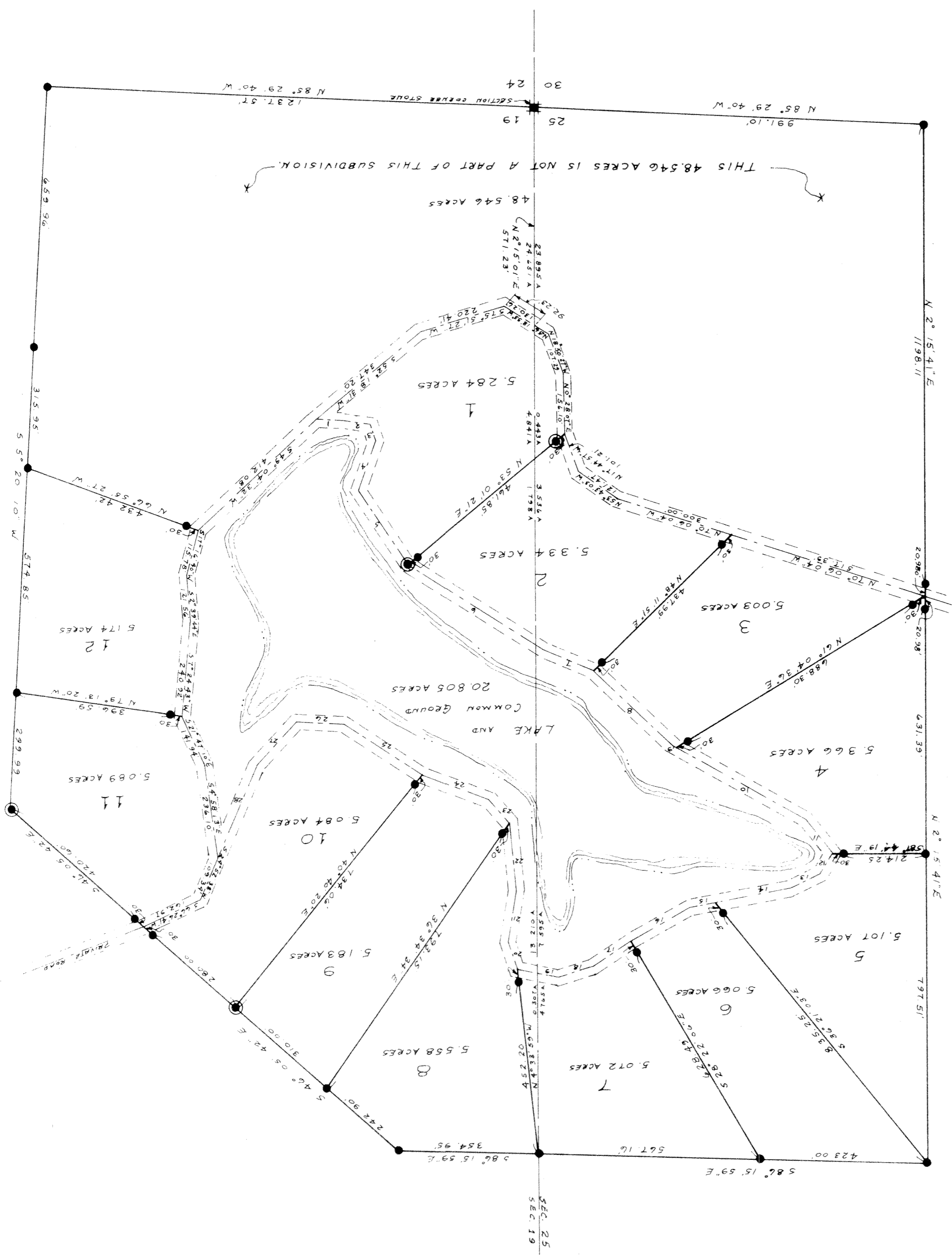


HIDDEN AVENUE



PREPARED BY
DELMAR E. GEORGE, P.E./P.S.
P.S. # 6153

Course No.	Bearing	Distance - FEET
1	N 84° 24' 38" W	72.86
2	N 78° 54' 33" W	61.98
3	N 17° 44' 41" W	46.05
4	N 22° 00' 28" E	132.60
5	N 31° 06' 49" W	224.05
6	N 55° 15' 10" W	409.09
7	N 65° 20' 20" W	132.46
8	N 44° 02' 00" W	279.41
9	N 58° 47' 13" W	100.00
10	N 58° 47' 13" W	369.57
11	N 37° 52' 55" W	112.50
12	N 34° 00' 56" E	59.20
13	N 66° 01' 38" E	79.87
14	N 81° 45' 25" E	196.20
15	N 81° 45' 25" E	68.00
16	N 62° 41' 41" E	174.22
17	N 57° 05' 45" E	111.16
18	N 74° 57' 31" E	97.45
19	S 76° 53' 24" E	106.81
20	S 15° 25' 46" E	71.42
21	S 11° 57' 05" W	134.51
22	S 3° 02' 51" E	171.95
23	S 38° 36' 00" E	81.00
24	S 67° 00' 34" E	179.61
25	S 53° 42' 17" E	233.68
26	S 84° 55' 16" E	121.26
27	N 44° 40' 52" E	147.32
28	N 24° 50' 28" E	269.42

SCALE: 1" = 200'

LEGEND
 --- CENTER LINE
 - - - SHORE LINE
 ● LEON PIN
 ⊙ CONC. MARK



ROAD AROUND LAKE 2
 BANKING

THIS 48.546 ACRES IS NOT A PART OF THIS SUBDIVISION.